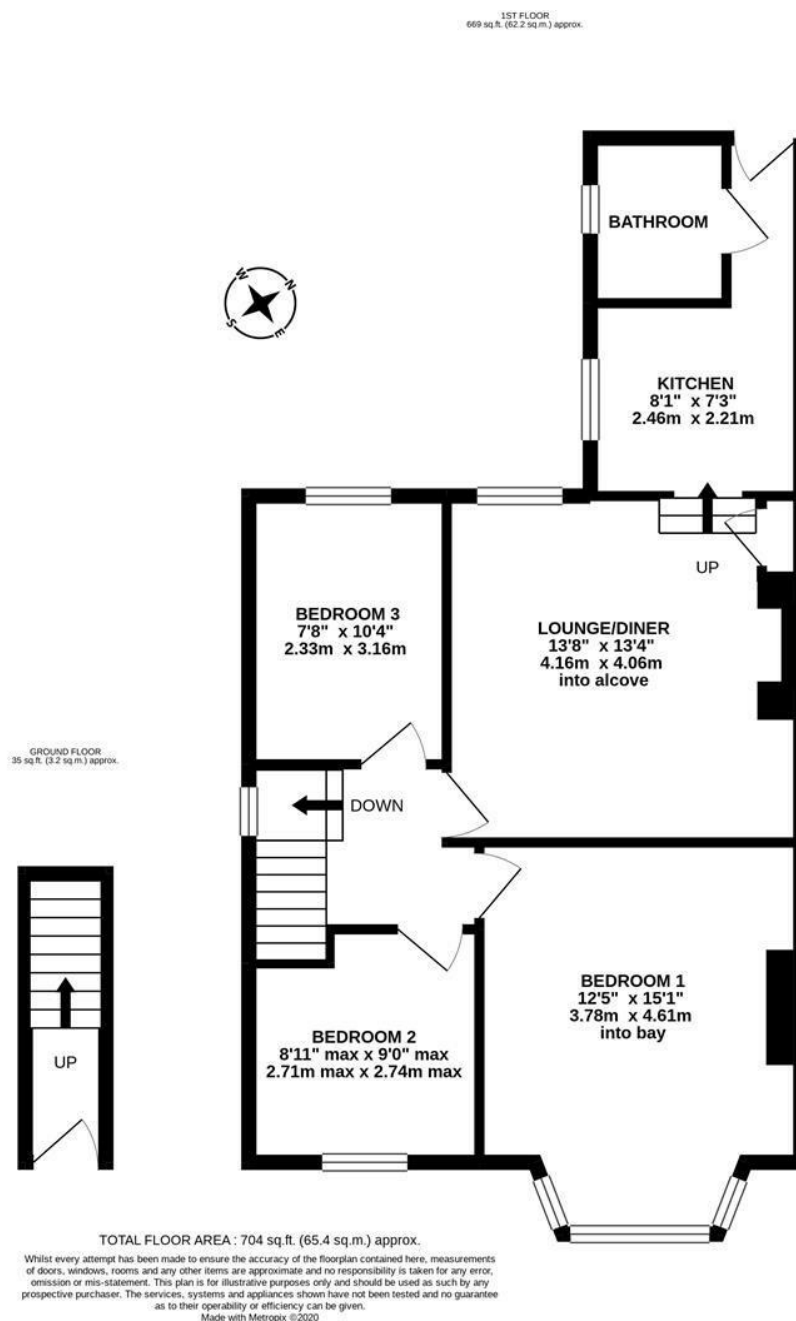




With Open Aspect Views, Private Courtyard and Walking Distance To Newcastle City Centre! This well presented upper floor 'Tyneside' flat is ideally placed on Goldspink Lane, in the ever-popular suburb of Sandyford. Close to Jesmond Dene, the local shops cafés and restaurants, Sandyford gives great access to the nightlife of Jesmond whilst still being within only a short walk to Newcastle City Centre.

The accommodation briefly comprises: entrance hall with staircase to first floor landing; lounge diner with steps down to; kitchen with fitted wall and base units and work surfaces, with an integrated oven, hob and extractor, with stairs leading out to the rear courtyard; contemporary bathroom with three piece suite including bath with shower over and spot lighting; three bedrooms, bedroom one measuring 15ft and with walk in bay and views over the Ouseburn. Externally, a delightful enclosed courtyard with fenced boundaries. Fully double-glazed, with gas central heating this great apartment is an opportunity not to be missed!

Upper Floor Tyneside Flat | 704 Sq ft (65.4m²) | Three Bedrooms | Lounge/Diner | Kitchen | Contemporary Bathroom & | Open Aspect Views | Double Glazed | Private Rear Courtyard | Great Location | Leasehold - Tyneside Lease with Peppercorn Rent - 962 Years Remaining | Council Tax Band A | EPC Rating: C



Offers Over £185,000

IMPORTANT NOTE: These particulars and the descriptions and measurements herein do not constitute representation and whilst every effort has been made to ensure accuracy, this cannot be guaranteed.

